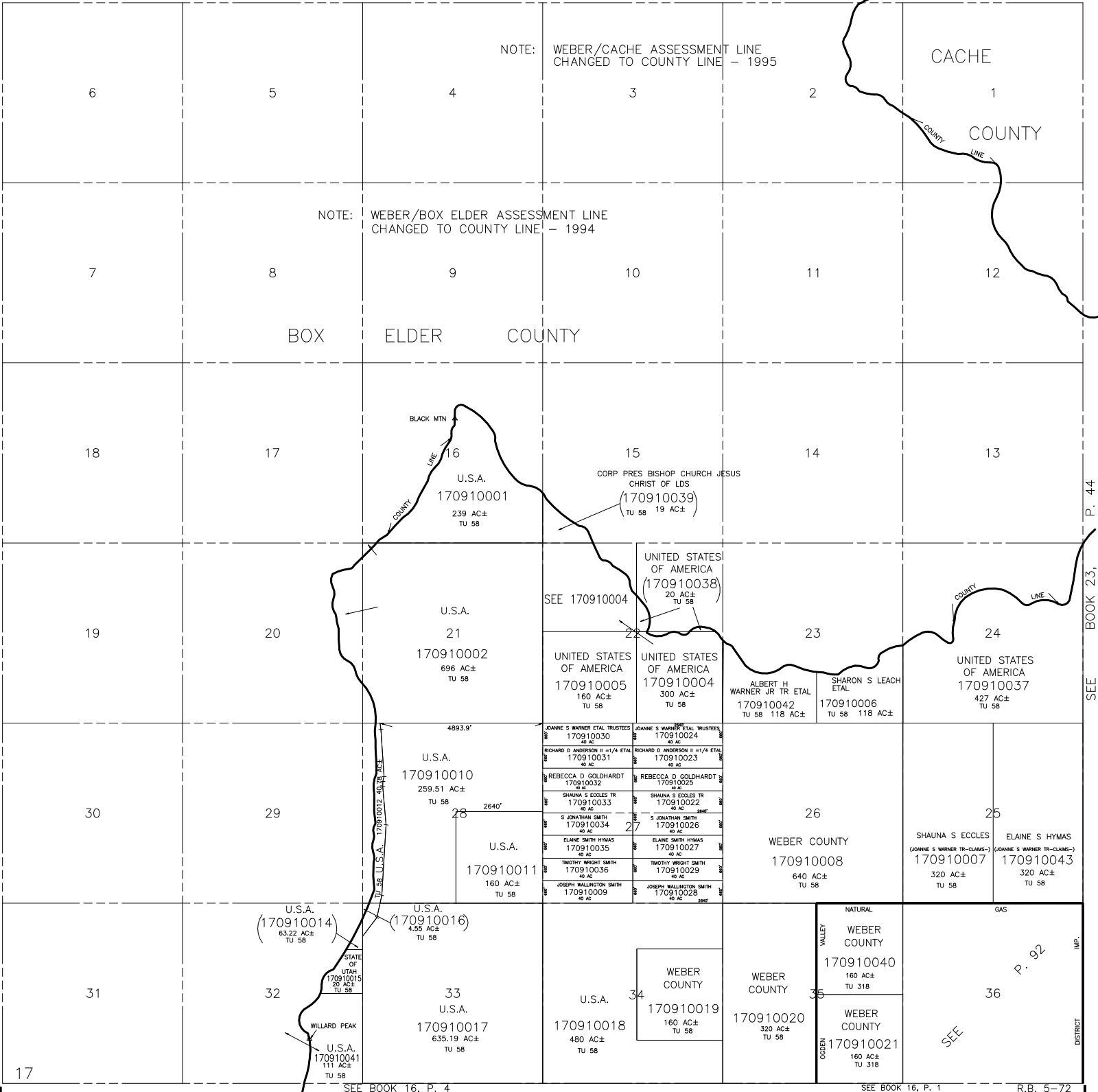


T.8N., R.1W., S.L.B. & M.

TAXING UNIT: 58,318

IN WEBER COUNTY
SCALE 1" = 2000'



NOTE: WEBER/CACHE ASSESSMENT LINE
CHANGED TO COUNTY LINE - 1995

NOTE: WEBER/BOX ELDER ASSESSMENT LINE
CHANGED TO COUNTY LINE - 1994

BOX ELDER COUNTY

CACHE COUNTY

BLACK MTN

CORP PRES BISHOP CHURCH JESUS
CHRIST OF LDS

(170910039)
TU 58 19 AC±

UNITED STATES
OF AMERICA
(170910038)
20 AC±
TU 58

SEE 170910004

UNITED STATES
OF AMERICA
170910005
160 AC±
TU 58

UNITED STATES
OF AMERICA
170910004
300 AC±
TU 58

ALBERT H
WARNER JR TR ETAL
170910042
TU 58 118 AC±

SHARON S LEACH
ETAL
170910006
TU 58 118 AC±

UNITED STATES
OF AMERICA
170910037
427 AC±
TU 58

JOANNE S WARNER ETAL TRUSTEES
170910030
40 AC

JOANNE S WARNER ETAL TRUSTEES
170910024
40 AC

RICHARD D ANDERSON II -1/4 ETAL
170910031
40 AC

RICHARD D ANDERSON II -1/4 ETAL
170910023
40 AC

REBECCA D GOLDHARDT
170910032
40 AC

REBECCA D GOLDHARDT
170910025
40 AC

SHAUNA S ECCLES TR
170910033
40 AC

SHAUNA S ECCLES TR
170910022
40 AC

S JONATHAN SMITH
170910034
40 AC

S JONATHAN SMITH
170910026
40 AC

ELANE SMITH HYMAS
170910035
40 AC

ELANE SMITH HYMAS
170910027
40 AC

TIMOTHY WRIGHT SMITH
170910036
40 AC

TIMOTHY WRIGHT SMITH
170910029
40 AC

JOSEPH WALLINGTON SMITH
170910009
40 AC

JOSEPH WALLINGTON SMITH
170910028
40 AC

WEBER COUNTY
170910008
640 AC±
TU 58

SHAUNA S ECCLES
(JOANNE S WARNER TR-CLAIMS-)
170910007
320 AC±
TU 58

ELAINE S HYMAS
(JOANNE S WARNER TR-CLAIMS-)
170910043
320 AC±
TU 58

U.S.A.
(170910014)
63.22 AC±
TU 58

U.S.A.
(170910016)
4.55 AC±
TU 58

STATE
OF
UTAH
170910015
20 AC±
TU 58

U.S.A.
170910017
635.19 AC±
TU 58

WILLARD PEAK
U.S.A.
170910041
111 AC±
TU 58

U.S.A.
170910018
480 AC±
TU 58

WEBER COUNTY
170910019
160 AC±
TU 58

WEBER COUNTY
170910020
320 AC±
TU 58

NATURAL
VALLEY
WEBER COUNTY
170910040
160 AC±
TU 318

WEBER COUNTY
170910021
160 AC±
TU 318

GAS
IMP.
P. 92
SEE

SEE BOOK 16, P. 4

SEE BOOK 16, P. 1

R.B. 5-72

SEE BOOK 23, P. 44

DISTRICT